

# Head Interface Board for Toshiba Tec CF1/CK1 Printheads

## GIS Inkjet Operating System

The HIB-TT-36-M is a GIS Head Interface Board designed to provide communications between the Toshiba Tec CF1/CK1 printheads and the GIS Print Manager Boards (PMB-C8/PMB-C2/PMB-C8-3).



## Printhead Control

The HIB-TT-636-M provides access to all the standard CF1/CK1 printhead settings including:

- Individual voltage trim per ban
- Binary and greyscale mode support
- Per printhead Toshiba Tec waveform download

## Power Control

The HIB-TT-636-M provides the CF1/CK1 range with all their power requirements via a single 24V power connector and is capable of driving up to 4 x CF1/CK1 printheads from a single board.

The HIB-TT-636-M Head Interface Board is designed with a compact form factor suitable for machine configurations requiring more space between the printhead connectors.

## Connectivity

The HIB-TT-636-M is a plug and play component of the GIS Inkjet Operating System. It is designed to drive up to 4 x CF1/CK1 printheads using a GIS Print Manager Board and GIS Software.

## Connectors

The HIB-XR-1002 requires just two connectors to drive the printhead:

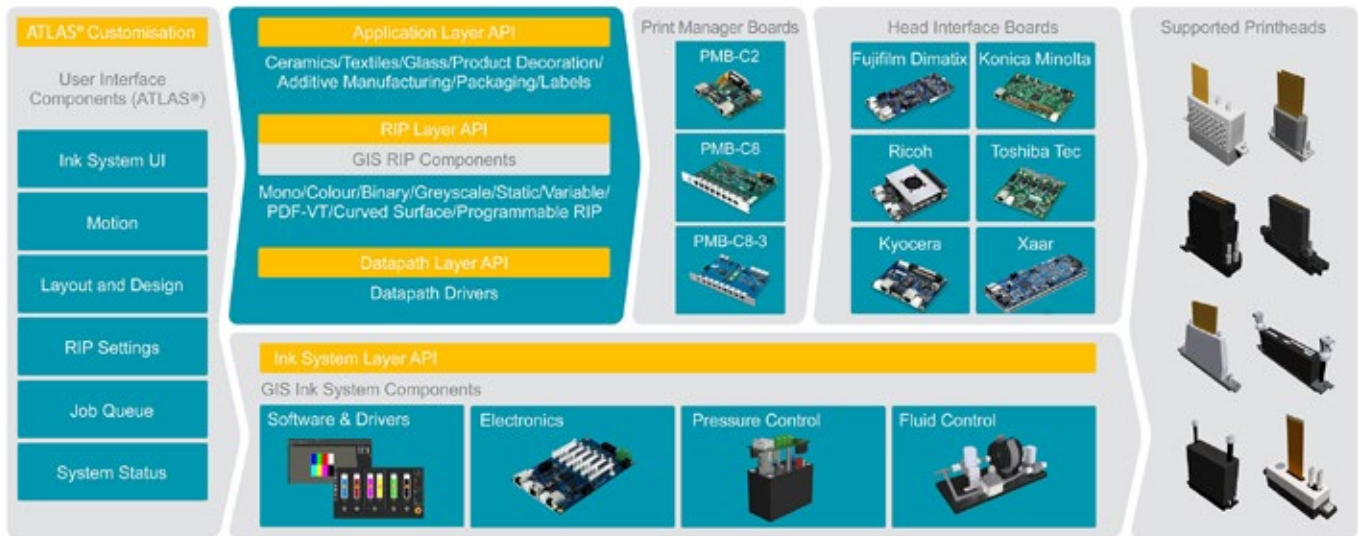
### Data Connector

A standard RJ45 for connection to a GIS Print Manager Board using CAT 6a STP shielded cabling (up to 10m).

### Power Connector

A standard 24V DC connector to supply the HIB-TT-636-M and up to 4 x CF1/CK1 printheads with power.

# Software, Machine Control and Sub-systems for Industrial Inkjet



GIS provides a complementary suite of products that companies can easily customise and rebrand - accelerating technology design and cutting development time:

## Software Support

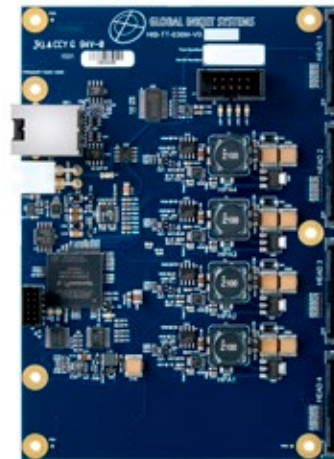
GIS offers a full range of software with its Atlas® platform to drive the HIB-TT-36-M.

The Atlas suite of products includes a flexible User Interface (UI) as well as a powerful server technology for managing the entire printing and sub-system process, Atlas Machine Control Services (MCS).

Built using Microsoft industry standard software and approaches, Atlas can be configured for different types of users and customised with different languages.

## Ink System Components

GIS also provides an extensive ink delivery system components range, comprising electronics, software and a portfolio of customisable header tanks and peripherals as well as all parts of the system that require significant development time.



## Specifications

### General

- Supported printheads : CF1/CK1
- Dimensions H 145mm W 100mm D 23.8mm Weight: 105g
- Designed for use with GIS software or as a stand-alone product
- High speed (200MB/s) data channel

### Power Requirements

- 24V DC

### Toshiba Tec Printhead Control

- Printhead voltage control
- Left and right nozzle bank voltage trim
- Grey level / Binary mode control
- Grey level drop count control
- Printhead waveform control

### Cable Length

- From PMB: 10m
- From HIB to head: 300mm