



Head Interface Board for KM1800i Printheads

GIS Inkjet Operating System

The HIB-KM-1800i from GIS is a Head Interface Board designed to provide direct communications between the Konica Minolta KM1800i printheads and the GIS Print Manager Board (PMB-C8-3).

Printhead Control

The HIB-KM-1800i provides access to all the standard KM1800i printhead settings including voltage trim, temperature (for printhead models with a heater), binary and greyscale model and waveform settings.

The HIB-KM-1800i can drive up to 2 x KM1800i printheads per board. It is a direct drive board and does not require any ICB from Konica Minolta.

Power Supply

The HIB-KM-1800i uses a convenient single 24V power connector. Power up and down sequencing is automatically controlled with voltage level auto sensing circuitry.

Form Factor

The HIB-KM-1800i is specifically designed with a small form factor for compact system architectures. Each board can drive up to 2 x KM1800i printheads.

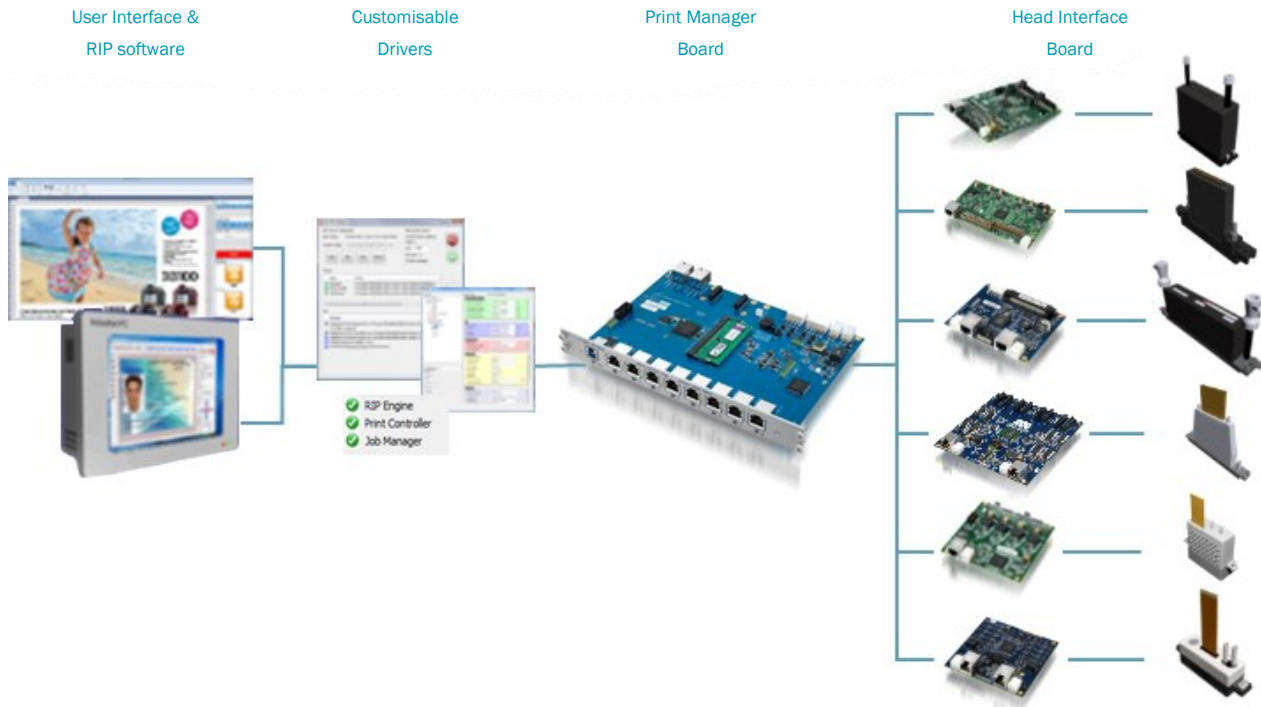


Features

| |
|--|
| General |
| Supported Printheads : KM1800i |
| Dimensions H 140mm, W 140mm, D 150mm |
| Weight : 185g |
| Specifically designed for use with GIS software products |
| High Speed (200 to 400MB/s) data channel |
| Power Requirements |
| 24V DC |
| KM1800i Printhead Control |
| Printhead and Heater Voltage Control |
| Left and Right Nozzle Bank Voltage Trim (0.1V steps) |
| Printhead Thermistor Control (0.1°C steps) |
| Grey Level / Binary Mode Control |
| Grey Level Drop Count Control |
| Printhead Waveform Control |
| Cable Length |
| From PMB : 15m |
| From HIB to head : 300mm |



GIS Operating System



Connectivity

The HIB-KM-1800i is a native component of the GIS Inkjet Operating System. It is designed to drive all of the KM1800i printheads using a GIS Print Manager Board and GIS Software.

Connectors

The HIB-KM-1800i requires three connectors to drive the printhead:

Data Connector:

A standard RJ45 for connection to a GIS Print Manager Board using CAT 6a shielded cabling (up to 15m).

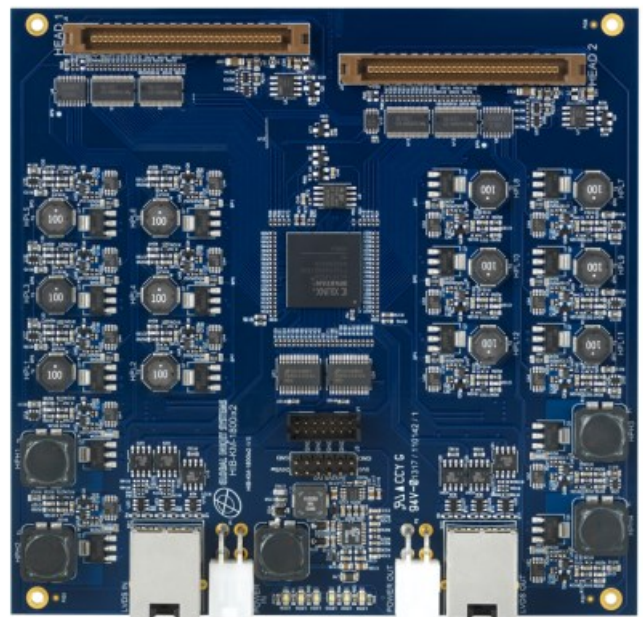
Power Connector:

A standard 24V DC connector to supply the entire board set and printhead with power.

Printhead Connector:

Cable CAB-KM-1800i supplied by GIS

HIB-KM-1800i



All trademarks acknowledged.

HIB-KM-1800i 0915